

Software Update Manual X-422 v1.3

Change Notes for SW v1.3:

- Update of the Android smartphone connection "EasyConnect" (Hewei PhoneLink) for Android OS 10 support.

Instruction for SW v1.3:

Duration of update is approximately 5 minutes (APP, MCU without preparation time).

Necessary equipment:

- APP/MCU: USB - drive or Micro SD card (max. 8 GB)

Note: Do not use the original SAT NAV micro SD card for the installation!

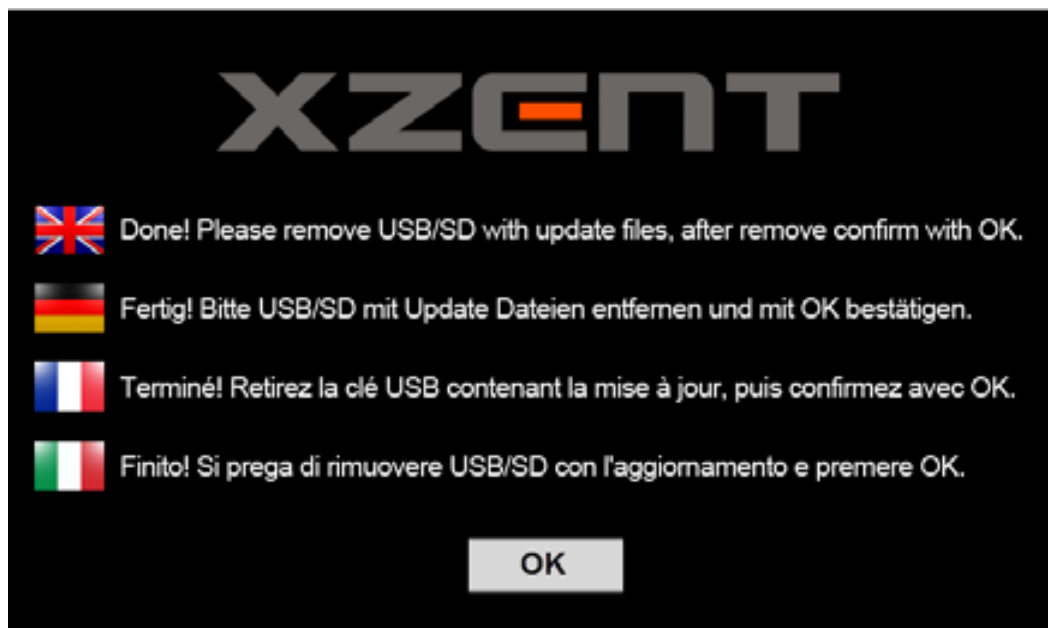
Preparation:

1. Download the v1.3 software at XZENT.com. "X-422_Update_v1.3.exe" The .exe file is a self-extracting ZIP archive. Internet browsers may prompt a warning which should be ignored in this case.
2. You can now execute the file directly at your download folder by double clicking the icon or use the right mouse button and select open. This opens the self-extracting utility program. Note: It is possible that your virus scanner shows a "virus detected" warning – Windows CE binaries are not executable on X86 Windows systems so they can't harm your PC. These messages are sometimes triggered by the heuristic of the virus scanner. If files are automatically deleted or quarantined, it is advisable to deactivate the virus scanner for a short time.
3. Now select with "Browse" the drive of the data carrier and press "Extract". The archive now automatically unpacks all files and folders to the disk. Once the extraction process completes and after "eject" the medium is ready for use.

Installation:

4. If the device is running, turn it off. When installing via a USB stick, plug it into the device. For the variant with the Micro SD card, remove the original navigation card and insert the prepared data carrier.
5. Now turn on the head unit. There will be 2 updates in a row. First, the task deletes all old applications. After that it copies the new applications to the unit. The progress bar will appear again and the MCU will update.

Note: Do not turn off the power or disconnect the power while the installer copies or write files to the head unit!



6. If you see this note, the update is complete. Remove the data carrier and press OK.

Note: When using an USB drive for the update, please use ONLY the USB 1 port. The 2nd USB port should remain free. After a successful update, the port can be used again.

Check the version of all the following components:

Simplified Version: v1.3		
APP	MCU	EasyConnect (HW-CARNET)*
M1421-1201-200703EB, BL V2.0	N8_87_20180712_01	2020.06.30-4155

*The HW-CARNET (PhoneLink) Version can be found in the official version screen at last position.