

Software update instruction

X-422 v1.2a ([optional] DAB Firmware)

Q: Which users are intended to install the software update?

A: All owners that have older APP/MCU versions installed. The DAB Firmware is optional, some shipped devices already have the new DAB FW pre-installed.

Change notes for SW v1.2a:

(A) Fixed nav info bar short/- long name issue

(B) Easy Connect version update via APP standard Update (Android OS 9.x support).

(C) [Optional] In case of DAB FW upgrade to v56217207489,

improvement for Ensemble Name Display, improvement for Stations with high bitrate Slideshows

Attention: please note that for “low Memory” issues (system instable) the navigation software [About this Software > Versioninfo] on your microSD card, needs to be updated to **v.9.18.40.750127 JAN 18 2019 (or newer)** via toolbox / naviextras.

Instruction for SW v1.2a:

Duration of update approximately 5 min (APP, MCU without preparation time).

[Optional] Duration of update approximately 2 min (DAB FW without preparation time).

Necessary equipment:

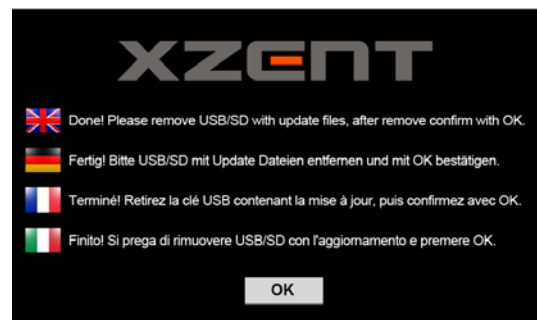
- SD Card (max. 8 GB) – **please don't use your original Sat NAV card.** or
- USB memory stick (max 8 GB)

Note: If using USB for update, please make sure to only connect 1 of the 2 USB ports. The 2nd port should be not connected with a different USB stick.

- 1) Download v4.0a SW files from our website “X-422_Update_v1.2a.exe” (self-extracting archive). Browsers may prompt a warning which should be ignored in this case.
- 2) Extract the archive by double click or use context menu „extract here...”. After extracting, you should receive following Folder (**DAB-FW** and **BIN**) and also one file (**updW_mcu.img**).
- 3) Copy all folders (**DAB-FW** and **BIN**) and the file (**updW_mcu.img**) to the root of your data carrier. Connect your prepared data carrier. Switch your device on via ACC, Power Button or any other regular way. If the device was already on, please restart the device.
- 4) **Auto Step1 APP (Please do NOT power off while the system shows a write/copy action on screen!)**
After booting up, APP will be installed and several files (displayed at progress bar) will be copied to System.

5) Auto Step 2 MCU (Please do NOT power off while the system shows a write/copy action on screen!):

When switching from Auto step 1 to Auto Step 2 it will start MCU update. The progress bar increases without displaying multiple files. When the progress bar reaches 100% it will show the END screen, asking to remove the update data carrier and then confirming the removal with OK button.



Picture 1: Display of the version info on all new XZENT models with capacitiv Touchscreens



Software update instruction X-422 v1.2a ([optional] DAB Firmware)

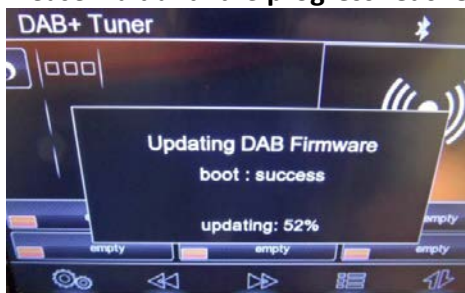
6) [Optional] DAB Firmware (Please do NOT power off while the system is showing a write progress)

Make sure the XZENT device **IS already powered ON**.

Connect your prepared data carrier with the folder (**DAB-FW**) to your device. The device may first enter USB mode and try to play a media file, exit USB and enter the DAB source/mode, if an auto scan is issued, please cancel it manually.

If the data carrier is detected it will show an update pop up (see picture).

Please wait until the **progress reaches 100%**, after a short while the pop up will close automatically.



Do now disconnect/remove the data carrier with the (**DAB-FW**) folder.

Restart the device and compare the DAB FW > enter DAB Source, click on Settings (Gearwheel Icon in far left bottom corner)

Validate your new installed software by checking the software of APP, MCU, DAB FW, EasyConnect.

Main Version: v1.2a	
APP M1421-1201-180717QB, BL V2.0	See Settings (Picture on first page of this instruction)
MCU N8_87_20180712_01	
[Optional] DAB FW 56217207489	Enter DAB click on Settings (Gearwheel Icon in far left bottom corner). Compare the version information at left side bottom line.
Easy Connect MD04.4.4.50	Enter EasyConnect Compare the version information at left side bottom line.